



Friends of South Cliff Gardens

South Cliff Gardens, Scarborough Management and Maintenance Plan

2025 – 2035



Director Approval and Endorsement demonstrating North Yorkshire Councils commitment to delivering this Management and Maintenance Plan.

This plan is supported by Barrie Mason (Assistant Director of Highways and Infrastructure, including Parks and Countryside) and Karl Battersby (Corporate Director of Environment).

Barrie Mason has commented that “our open spaces and parks demonstrate the Council’s commitment to residents and visitors alike. We aim to maintain the high-quality parks and open spaces for the enjoyment of the public with appropriate and sympathetic commercialisation to ensure our open spaces can be maintained to such high standards. This enables greater benefits - not only to appreciate the beautiful gardens, vistas, flora and fauna but also enables a focus on wellbeing and health that open spaces bring to all.”

Director

Date

CONTENTS

1.0	Executive Summary	3
2.0	Introduction.....	5
2.1	Purpose of Management and Maintenance Plan.....	5
2.2	Background Information	5
3.0	Current Situation.....	7
3.1	The Site	7
3.2	Site Description.....	7
3.3	Location Plan	8
3.4	South Cliff Gardens Site Plan	9
3.5	Site History and Heritage	10
3.6	Heritage Photos	13
4.0	Site Management.....	14
4.1	North Yorkshire Council	14
4.2	NYC Parks and Countryside Information.....	14
4.3	South Cliff Gardens Team Structure	15
	15
5.0	The Community	16
5.1	Local Demographics	16
5.2	North Yorkshire Council	18
5.3	Friends of South Cliff Gardens.....	18
5.4	Volunteer Activities in South Cliff Gardens.....	18
6.0	Landscape and Buildings.....	20
6.1	Summary of main features	20
6.2	Environmental Management	20
6.3	Habitats	20
6.4	Slope Stabilisation Works	21
6.4	Recreation	21
6.5	Access.....	22
6.6	Furniture	22
7.0	Green Flag Award	23
7.1	2025 Feedback.....	23
7.2	Recommendations.....	23
8.0	Activity Plan and Digital Technology	24
9.0	Action plan.....	26
10.0	Monitoring and Evaluation Review	26
	Appendix One	26

1.0 Executive Summary

North Yorkshire Council (NYC) has been the lead organisation in the delivery of the National Lottery Heritage Fund (NLHF) and the National Lottery Community Fund, Parks for People project but managed the project with the support of a range of partners, including the Friends of South Cliff Gardens and other local organisations.

This Management and Maintenance Plan has been developed to manage the South Cliff Gardens in line with the NLHF Parks for People Programme.

South Cliff Gardens are an integral part of North Yorkshire Council's commitment to local regeneration and supports their overall vision to support thriving places and empowered communities that live, work, visit and do business in North Yorkshire; develop more sustainable and connected places across North Yorkshire; ensure the people of North Yorkshire are safe, healthy and living well and maximise the potential of North Yorkshire's people and communities.

This plan considers the opportunities for generating income from the newly restored South Cliff Gardens as an integral part of the future management of the Parks for People Project.

Part of that 5 year (medium term plan) is a desire to plan longer term to ensure the maintenance standards of parks and open spaces remain high quality as well as accessible to residents and visitors alike.

This plan is supported by Barrie Mason (Assistant Director of Highways and Infrastructure, including Parks and Countryside) and Karl Battersby (Corporate Director of Environment).

Barrie Mason has commented that “our open spaces and parks demonstrate the Council’s commitment to residents and visitors alike. We aim to maintain the high-quality parks and open spaces for the enjoyment of the public with appropriate and sympathetic commercialisation to ensure our open spaces can be maintained to such high standards. This enables greater benefits - not only to appreciate the beautiful gardens, vistas, flora and fauna but also enables a focus on wellbeing and health that open spaces bring to all.”

2.0 Introduction

2.1 Purpose of Management and Maintenance Plan

The purpose of this Management and Maintenance Plan is to provide a clear plan of action to maintain the quality of the gardens following a comprehensive restoration programme and to safeguard the investments made using National Lottery Heritage Fund as well as council budgets:

- Ensure the longevity of this locally important green space
- Provide a clear vision for the policy, direction and development of South Cliff Gardens
- Ensure community involvement and ownership relating to South Cliff Gardens
- Act as a basis for identifying priorities for action within South Cliff Gardens
- Set continuous aims through the action plan that address issues relating to the needs of the park, community and visitors

This management plan is designed to outline the way forward regarding long-term improvement and maintenance.

This document has been produced with the support and input of the Friends of South Cliff Gardens and this group will continue to play an important role in the delivery of the vision for the site.

It is designed to be a working document, which will enable staff and the local community to monitor and review on-going management and maintenance.

2.2 Background Information

On 10 of January 2019 an HLF 'Parks for People' grant of £4.66m was awarded to Scarborough Borough Council to restore the South Cliff Gardens. The following objectives were achieved through the delivery of the project:

- Repair and conservation of the historic fabric to a high quality alongside works to stabilise the cliff.
- Reconnection of people with their heritage, attracting new and larger audiences.
- Making the Gardens more accessible and welcoming to all with the creation of an accessible route through the Gardens and accessible visitor facilities.
- Renewing the health and tourism benefits the Gardens were originally created for.
- Providing a place for people to learn new skills and socialise.
- Creating horticultural excellence in coastal gardening and providing wildlife and environmental benefits.
- Building on 10 great years of active community involvement with the Friends of South Cliff Gardens to further develop local ownership.
- Providing effective management to make the most of the Gardens and safeguard them for future generations.
- The following key interlinked projects were achieved within the masterplan:
 - Creation of an accessible path including reopening the Cliff Lift Tunnel.
 - Creation of the Clock Café Family Hub including a new bespoke play area, repurposing a chalet to create public toilets/changing facilities as well as the creation of space for a pop-up café.
 - Establishment of a new Operations Depot to fulfil the future maintenance needs of the site and expansion of volunteer involvement improving future sustainability of the Gardens.
 - Restoration of the Italianate Steps - to provide a grand transition between the Gardens and the Promenade and the Spa buildings.
 - Restoration of Shelters. All 14 shelters and Holbeck Clock Tower have been restored including providing improved accessibility.

- Spa Gardens North stabilisation area and landscape reinstatement. The reinstatement work proposed as part of the match funding and the follow on HLF works will ensure the best possible landscape restoration.
- Site wide infrastructure restoration and enhancement. The project included as much improvement as possible, including path works, step and wall repairs, new construction, drainage work, tree management and planting.
- Construction of a new operational depot/community centre.
- Repurposing a beach chalet to provide additional toilets.
- Construction of new accessible paths to key areas- including the Rose Garden from Esplanade, a link to Beeforth's Hive and the Operations Depot and improved access to the Italian Garden.

3.0 Current Situation

3.1 The Site

South Cliff Gardens is one of Scarborough's great historic public gardens. It offers formal planting, wooded walks down to the seafront and a haven for wildlife. The Gardens benefit from impressive views over the coastline, out to sea and towards Scarborough, particularly to the northern end of South Bay. There are clear views of Scarborough Castle from many vantage points within the Gardens. The Gardens also act as a backdrop to inland views from the seafront, particularly behind the Spa Complex buildings, which lie between the seafront and the Gardens above. From much of the Esplanade at the top of the cliffs, sea views are now obscured where vegetation has outgrown its original intent. Views are kept clear however from specific viewpoints, such as opposite the Crown Hotel and from key points within the Gardens.

3.2 Site Description

The steeply sloping topography of the site has given rise to an extensive network of footpaths that interlace the Gardens, often interconnected with steps, and supported by stone retaining walls. The Gardens are Grade II listed, described by English Heritage as 'outstanding', and the landscape contains many historic gems, including both the gardens and associated structures.

South Cliff Gardens comprises numerous discrete gardens of varying age and character, including in chronological order: the Spa Gardens, started as private gardens in 1837; the Rose Garden; Holbeck Gardens; and finally, Harry Smith's magnificent Italian Gardens, completed in 1914.

There are 14 shelters of varying size, design and construction distributed around the footpath network and at the southern edge of the site is the listed restored sandstone Holbeck Clock Tower, a putting green, (with public toilets recently refurbished and open all year), and the UK's largest star map viewpoint. The latter was developed relatively recently on the site of the former seawater swimming pool.

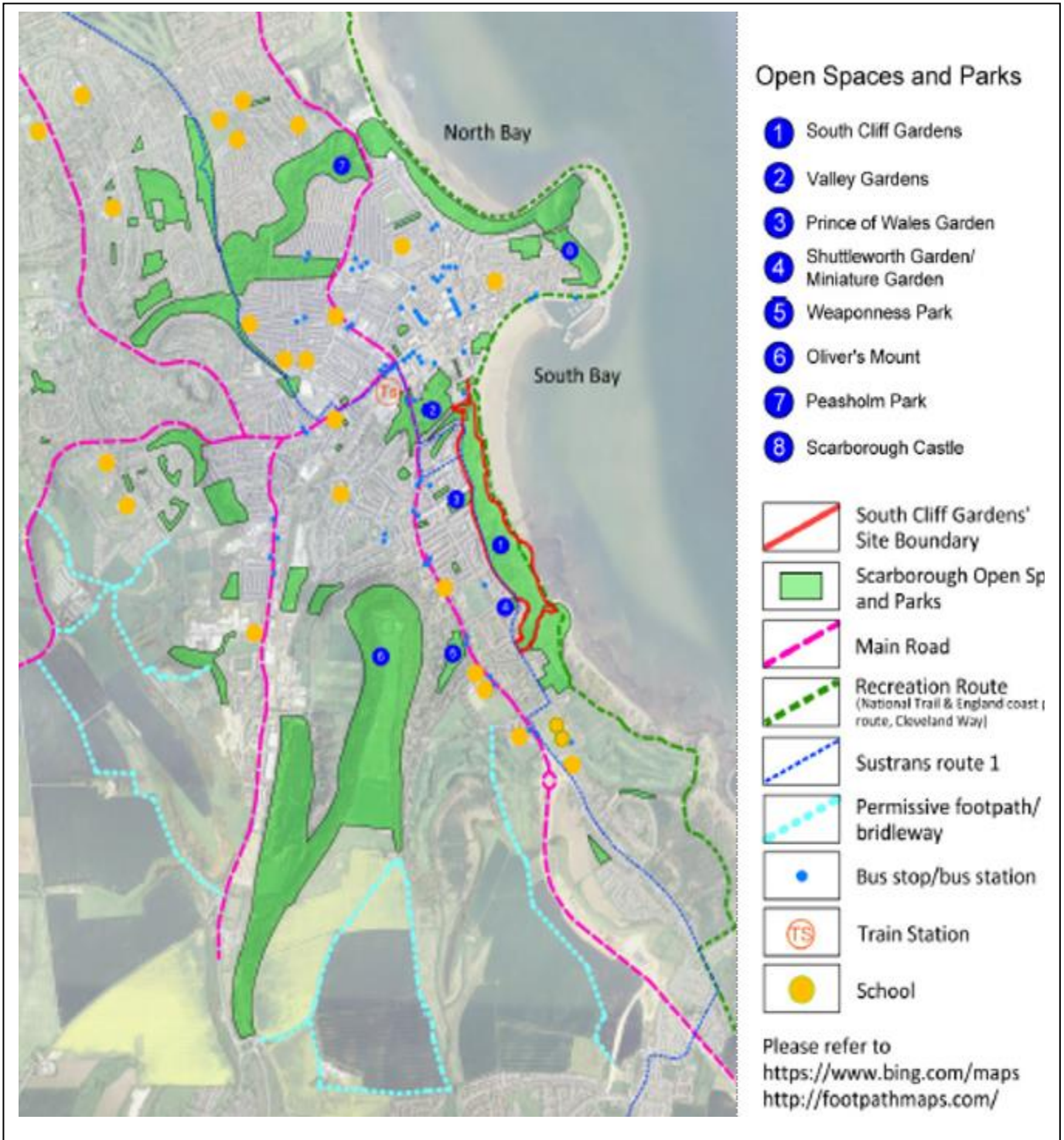
Along the seafront below South Cliff Gardens and to the south of the Spa Complex, is a collection of buildings catering to seasonal seaside use, such as beach huts, and the former Sunbathing building, now sadly derelict. The Clock Café a little above is open for most of the year and is a local landmark and meeting point. It derives its name from the small clock tower incorporated into the design of the building. This, together with the adjoining newly installed bespoke timber play area and public toilets, funded from the HLF 'Parks for People' project, form the main social hub of South Cliff Gardens. A new volunteers' base and study/community space, named Beeforth's Hive (after Lord Beeforth), also containing the grounds staff's base is another key addition to the Gardens funded through the HLF programme.

As well as visiting the Gardens as a destination, many users pass through as an attractive route to or from either the town or the seafront shops and the Spa Complex. The latter is now a popular venue for concerts, comedy and theatre productions. It also provides conference facilities and hosts major annual events such as Sci Fi Scarborough and Scarborough Pride. The Sun Court is the venue for summer concerts from the Spa Orchestra who have been in existence for 112 years. Farrer's Bar and Restaurant, named after the lady who discovered the Spa waters, provides refreshments.

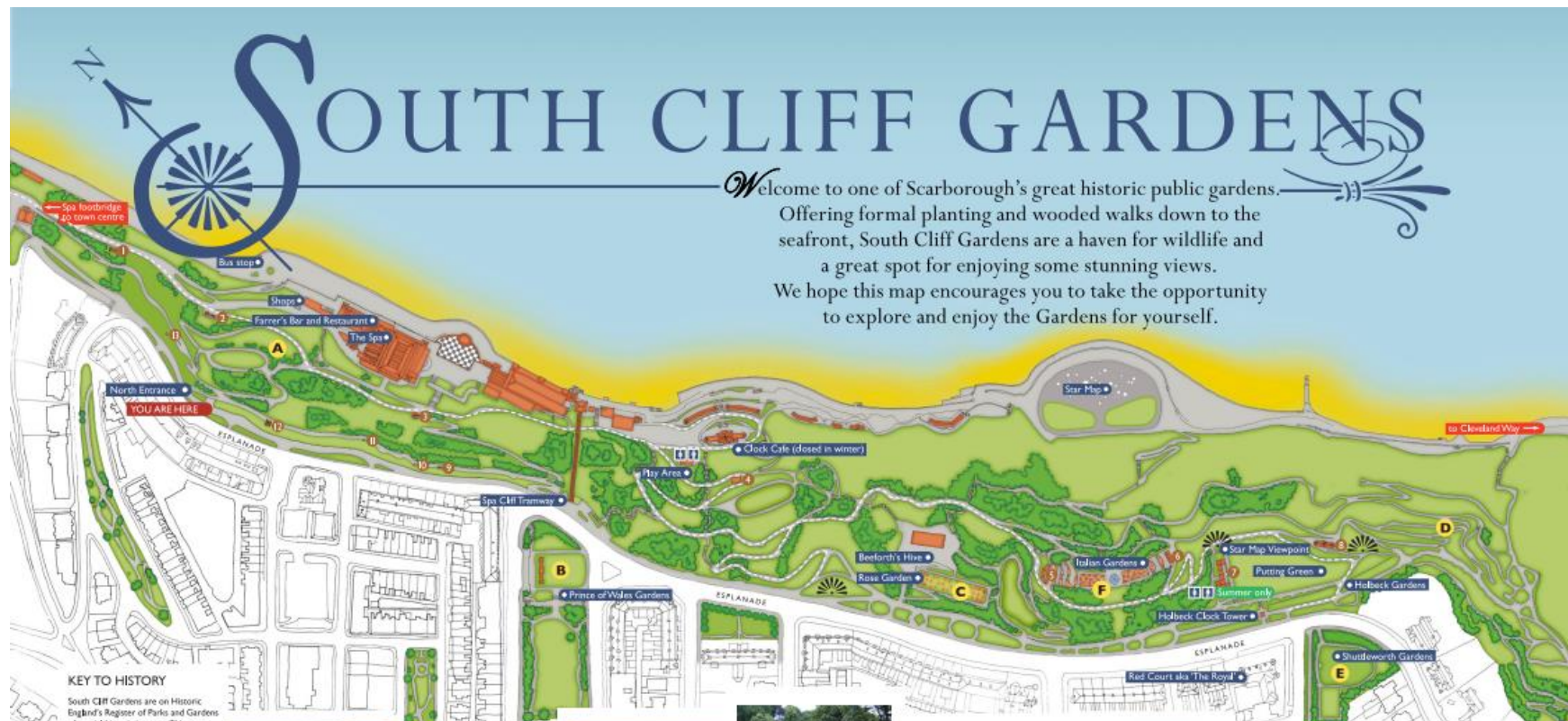
The Spa Cliff Tramway is an interesting and historic feature, which for a modest sum transports people between the seafront next to the Spa and the Esplanade at the top of the cliff. This line bisects South Cliff Gardens but is now much less of a barrier since the original foot tunnel underneath has been restored and reopened.

3.3 Location Plan

This plan shows the location of South Cliff Gardens within Scarborough as well as other key parks and open spaces.



3.4 South Cliff Gardens Site Plan



Welcome to one of Scarborough's great historic public gardens. Offering formal planting and wooded walks down to the seafront, South Cliff Gardens are a haven for wildlife and a great spot for enjoying some stunning views. We hope this map encourages you to take the opportunity to explore and enjoy the Gardens for yourself.

KEY TO HISTORY

South Cliff Gardens are on Historic England's Register of Parks and Gardens of special historic interest. This map indicates the various individual gardens that have combined to form the current configuration. Thanks to the efforts of the Friends of South Cliff Gardens and Scarborough Council (now North Yorkshire Council), together with funding from The National Lottery Heritage Fund and local funding, the Gardens underwent an extensive two year £7m restoration project completed in 2023.

- A** Spa Gardens, started around 1837 (as private gardens)
- B** Prince of Wales Gardens, started around 1860 (as private gardens)
- C** Rose Garden, started around 1883 (as private gardens)
- D** Holbeck Gardens, started 1885 (as private gardens)
- E** Shuttleworth Gardens, started before 1911 (as private gardens)
- F** Italian Gardens, started before 1914 (as public gardens)



Shelters

The Shelters (numbered 1-5 on this map) are situated around the gardens alongside the footpaths and were built at various times between 1862 and 1928. They vary in style from formal Victorian designs to quaint hideaways. They provide convenient places to catch your breath or take refuge from a sudden shower with many benefiting from sea views.



Viewpoints

The Gardens are the perfect spot to take in the panorama of Scarborough's South Bay from the Castle towering over the Old Town across to the dills stretching down to Flamborough Head. At night the beam from the lighthouse at Flamborough can be seen echoing the harbour's own call to shelter.



Clock Cafe

Look out for the union flag flying to indicate that the cafe is open - a pleasure location to sit and enjoy the seascape. Why not break your walk before moving on to a concert in the Spa Suncourt or prior to exploring rooftop pools on the shore?



Italian Gardens

Designed in the early 20th Century, the Italian Gardens were one of the many achievements of Harry W Smith, noted landscape designer who also designed Scarborough's faux-oriental Posholm Park at the North Bay. The sheltered Italian Gardens feature formal planting, seating and a fishpond overseen by Mercury, the winged messenger.



Children's Play Area

The play area was designed and created to inspire play and fun, encourage residents and visitors with children to spend more time enjoying the gardens and enhance their appeal as a destination to visit within the town.



Beeforth's Hive

Beeforth's Hive combines a fully equipped operations base for the garden's maintenance team and a new community centre with outdoor classroom. It commands an amazing view across the South Bay towards Scarborough Castle.



Holbeck Gardens

Offering some of the best views from a putting green anywhere in England, Holbeck Gardens also feature traditional flowerbeds and the landmark Holbeck Clock Tower built to celebrate the Coronation of King George V in 1911. Paths from the Gardens weave down to the site of the 1993 landslide which destroyed a nearby hotel.

Most accessible route (map free)
Most accessible route continues beneath Cliff Lift

This map has been produced by the Friends of South Cliff Gardens and Scarborough and District Civic Society for the benefit of both residents and visitors.

We hope the map will increase your enjoyment of the gardens.

In 1957 all the gardens came under the management of the Council for the first time. This map has been produced to mark the completion of the major restoration project during 2023.



Crown Copyright. All rights reserved.
Licence Number: 100024267



3.5 Site History and Heritage

South Cliff Gardens is a linear public park situated on the cliffs overlooking the Spa Complex and South Bay, Scarborough. The gardens developed during six main stages of land acquisition and landscaping which commenced during the early 19th-century. This occurred following the development of the spa, discovered in 1626, by a local woman who encouraged visitors to drink the water as a medicinal aid. Scarborough developed as a spa resort and by the early eighteenth century it was operating in fierce competition with the spa at Harrogate. In conjunction with the spa, the seaside resort grew in popularity during the 18th-century, and it is thought to be the first recorded place in England to offer bathing machines in 1735.

The Cliff Bridge Company, formed in 1826, negotiated a lease of the Spa from the Corporation after building the Spa Bridge to improve links to the town. The first phase of landscaping the site was by George Knowles (1776-1856) who laid out paths and pleasure grounds on the cliffs west of the Spa buildings. The company employed Henry Wyatt (1769-1862) to enlarge the Spa Pavilion from 1837-9. He built a castellated structure known as the Spa Saloon, set behind an improved sea wall with matching castellation. By the 19th century there was a saying 'The Spaw is Scarborough and Scarborough is The Spaw', demonstrating the significant economic importance of The Spa to the town.

In 1856 The Cliff Bridge Company took advantage of the proximity of Sir Joseph Paxton (1803-1865), the foremost public park designer in the country, who holidayed in Scarborough. They asked him to provide a design for pleasure grounds and alterations to the Saloon. Paxton's plans were submitted by his assistants Edward Milner and G.H. Stokes and included a music hall, viewing tower, Italianate terrace and steps, shrubberies, and circulatory footpaths which extended Knowles' layout. In 1875 the first passenger funicular railway in the country was installed on South Cliff. The Music Hall burnt down the following year and by 1877 was rebuilt by Verity and Hunt of London on the footprint of the earlier buildings.

George Lord Beeforth JP (1823-1904), a prominent local businessman, bought land on South Cliff and built several properties at the southern end of the esplanade. Beeforth enclosed land on the cliffs to form his own private gardens named after his house 'The Belvedere'. The house was linked to the garden via a tunnel under the road. Beeforth planted an oval shaped rose garden, or 'Rosary' shown north of the tunnel on the 1893 local OS map. Other garden areas are shown south of the tunnel on the same plan. These included large tracts of shrubs and woodland which gave shelter from the harsh salt-laden coastal winds.

In 1885 the Corporation purchased land south of Dickinson's Point and laid out Holbeck Gardens with assistance from the Cliff Bridge Company who loaned their gardener, Mr Skipsey. In 1909 the Corporation purchased the majority of Beeforth's gardens, and he retained a small area accessed by way of the tunnel from his house. The Borough Engineer, Harry Smith subsequently added more paths, the Italian Garden, the Clock Cafe and beach huts, a new Floral Lounge or Rose Garden, shelters, and seats. Smith's improvements to South Cliff Gardens during the early 20th-century continued to reinforce the spirit of the seaside resort at one of the first 'seaside' venues. The relationship between The Spa buildings and South Cliff Gardens is intrinsic. There is also an inherent relationship between the landscape and geology of the cliffs and the spa spring, whose location is now marked by a stone plaque.

South Cliff Gardens are composed of six-character areas which developed incrementally and reflect the distinct character of separate eras of design.

The general layout of South Cliff Gardens has changed little since their early-mid 20th century heyday, when tourists flocked to Scarborough in great numbers. The main exception is the removal of the large saltwater pool and related buildings and terracing. Over the years the Gardens, along with their buildings and structures, fell into disrepair and were classified by Historic England as 'Heritage at Risk'

due to the “deterioration of the wider Garden combined with cliff erosion, resulting in the loss of sections of the path systems and garden integrity.” Many paths were closed and heritage features such as shelters had deteriorated significantly. Much ornamental planting was lost, the setting of the Italian Steps compromised and unmanaged vegetation growth concealed key views.

Just prior to the commencement of the HLF restoration it was necessary to appoint a specialist contractor to design and construct cliff stabilisation measures to protect the Spa Complex and the Esplanade above from possible collapse of the steep cliffs due to ground movement. This has also undeniably compromised part of the heritage of the Gardens but the consequences of not carrying out this work were potentially far more serious.

There are a remarkable number of surviving historic shelters in South Cliff Gardens, 14 in all, possibly more than in any other park or garden in the Country. These have group value, and some may be worthy of listing. The abundance of shelters may have been provided as protection from the east winds and for visitors who were not allowed back into their nearby holiday accommodation until the evening. The earliest shelters were described as ‘arbours’ on the 1850 OS map.

The earliest shelters at South Cliff Gardens were ornate and may have been designed and located by Paxton or his assistants, G.H. Stokes, and E. Milner. It is known that Frank Tugwell was responsible for at least one shelter dating from the end of the 19th-century. Harry Smith also designed shelters when the gardens were amalgamated with gardens purchased from Beeforth.

3.6 Heritage Photos



Figure above: 'A view of The South Cliff, Scarborough, showing its further capabilities and proposed New Buildings. Drawn by Mr. H.B. Carter' c.1840 showing the Cliff Bridge, railings leading up the cliff path to the Esplanade - Government Art Collection.

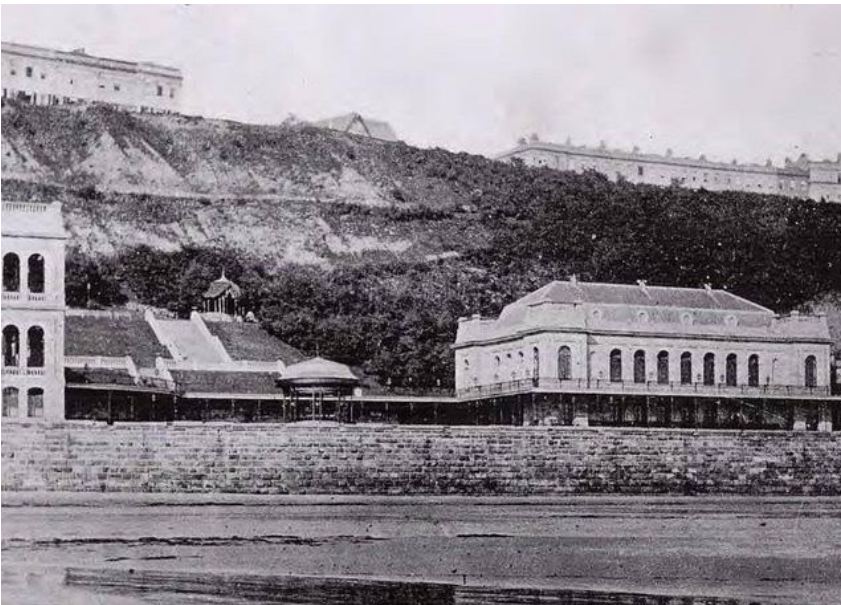


Figure Above: c.1870 Photograph from the beach showing Paxton's Music Hall, extended Colonnade Bandstand, Watch Tower, Italianate Steps as well as the Paxton's shelter on top of Paxton's Steps (Shelter 3 showing the previous shape).

4.0 Site Management

4.1 North Yorkshire Council

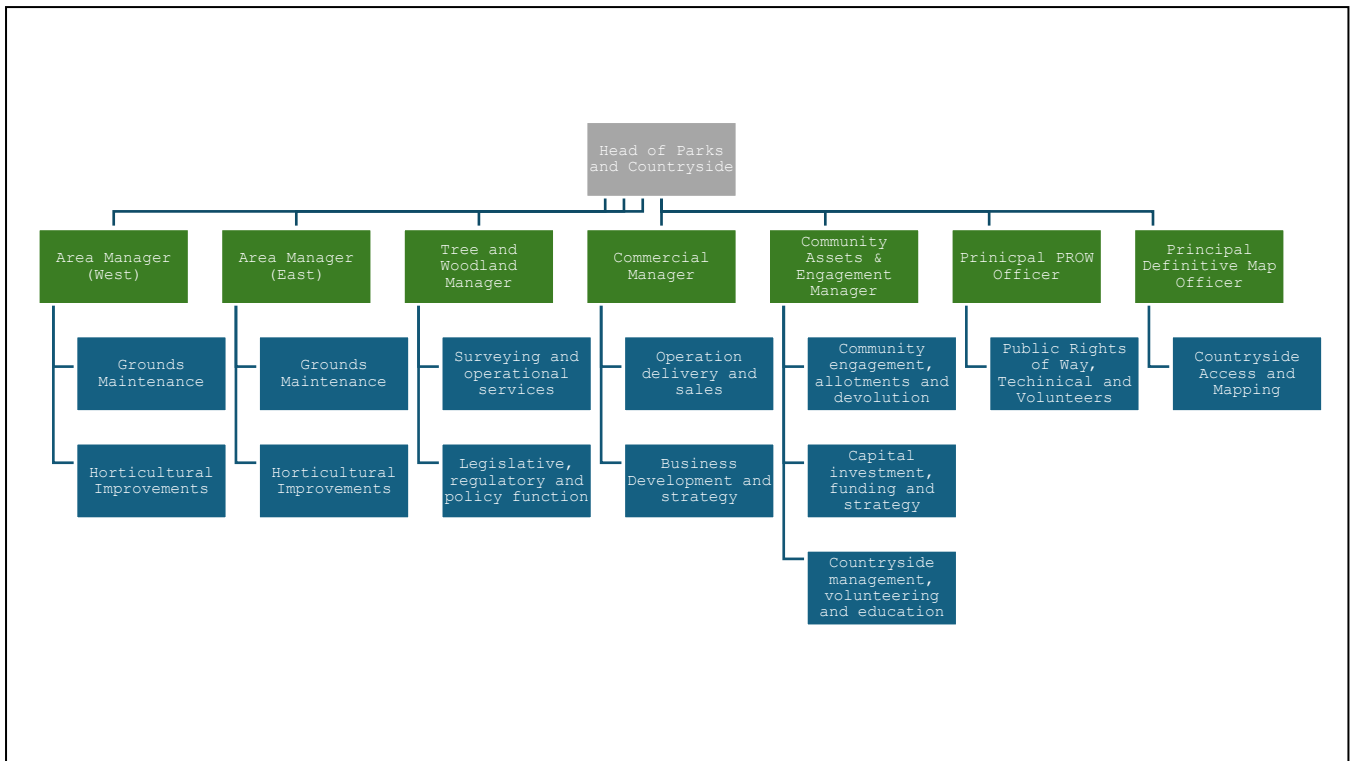
North Yorkshire Council has gone through a period of rapid transformation and organisational change, bringing together 7 district authorities and the county council to become a unitary organisation on 1st April 2023. Since this a series of restructures has taken place to bring the new authority together with one set of values and one forward vision. Parks and Countryside sits within the Environment Directorate, which is one of eight Directorates reporting to the Chief Executive. The Council's Management Board is shown in the diagram below.



4.2 NYC Parks and Countryside Information

With the Parks for People funding the Council employed a Head Gardener and Community Engagement Officer through the project who were fundamental to the delivery of the Business Plan (through raising the profile of horticulture and the delivery of activities and events). A new staffing structure is now in place for the council's Parks and Countryside service which will enable the delivery of an Action Plan in coordination with the Business Plan and Management and Maintenance Plan. The following staffing structure is now in place and fully funded through the grant and council funding (as per the diagram below).

We have a dedicated team of Gardeners at South Cliff Gardens who are supported as required by additional gardeners, the Tree and Woodlands Team as well as a specific Community Engagement Officer for South Cliff Gardens within the Community Assets and Engagement Team.



4.3 South Cliff Gardens Team Structure



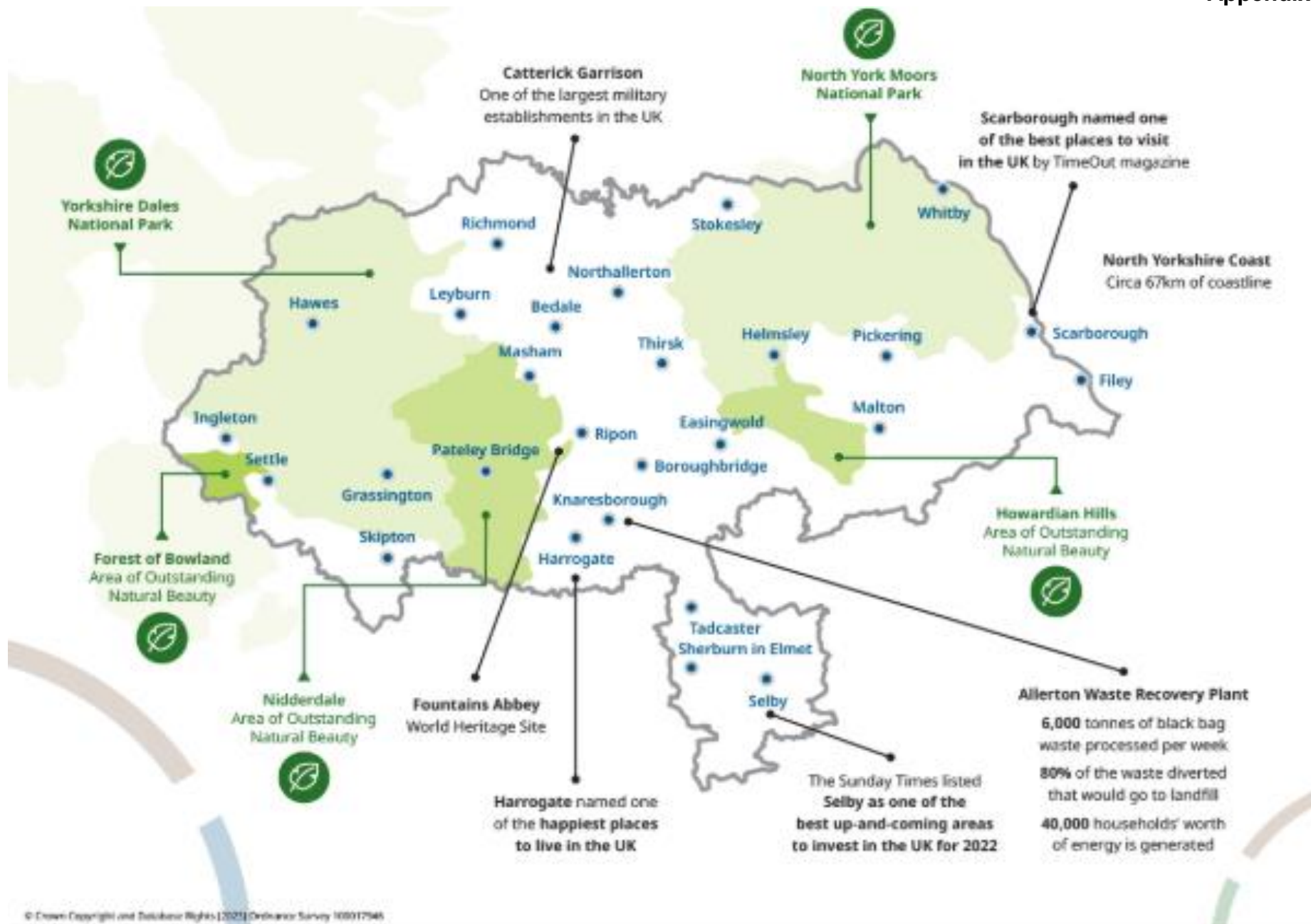
As shown in the above chart, there is a strong and robust team of gardeners within South Cliff Gardens whose main focus is on delivering the actions within this Management and Maintenance Plan. They are supported by the Tree and Woodlands Team, the Commercial Team as required and by the Community Engagement Officer who focusses on South Cliff Gardens. The Apprentice role is considered as and when vacancies arise giving a development opportunity for people to join NYC Parks and Countryside and be given the chance to train up to provide them more experience to apply for a permanent position. As with all roles at NYC training is provided to all staff as and when required or needed.

5.0 The Community

5.1 Local Demographics

North Yorkshire is an attractive place to live, work and visit. The county has an enviable identity with a brand globally renowned for its culture and spectacular landscapes. The county has a varied and vibrant local economy, the lifeblood of which is defined by over 32,000 small and medium enterprises (SMEs) which form 99% of all businesses locally. North Yorkshire Council serves a diverse and dispersed population of an estimated 615,400 people across a geographical area of over 8,000 square kilometres. Large parts of the county sit within two beautiful National Parks. Ninety eight percent of the county is either sparsely (13%) or super-sparsely (85%) populated with just over a third of the population living in these areas. This results in a population density of just 77 people per square kilometre, compared with an England average of 432.





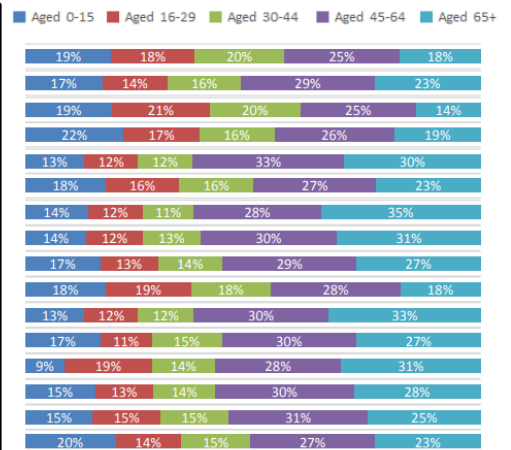
5.2 North Yorkshire Council

South Cliff Gardens are located within the Weaponess and Ramshill Division of North Yorkshire Council. They are also located within the Scarborough Town Council area.

Weaponess and Ramsgill Ward has a total population of 8060 (according to data from the Office for National Statistics 2015 midyear estimates. As shown in the table below over 50% of the population from that ward are aged over 45.

2015 Mid-year population estimates by broad age group - Scarborough

North Yorkshire Ward (Electoral Division)	Total population	Percentage by age group				
		Aged 0-15	Aged 16-29	Aged 30-44	Aged 45-64	Aged 65+
England	54,786,330	19%	18%	20%	25%	18%
North Yorkshire	602,280	17%	14%	16%	29%	23%
Castle	8,710	19%	21%	20%	25%	14%
Eastfield & Osgodby	6,990	22%	17%	16%	26%	19%
Esk Valley	6,200	13%	12%	12%	33%	30%
Falsgrave & Stepney	8,170	18%	16%	16%	27%	23%
Filey	6,620	14%	12%	11%	28%	35%
Hertford and Cayton	7,770	14%	12%	13%	30%	31%
Newby	6,180	17%	13%	14%	29%	27%
Northstead	7,810	18%	19%	18%	28%	18%
Scalby and the Coast	8,320	13%	12%	12%	30%	33%
Seamer & Derwent Valley	9,160	17%	11%	15%	30%	27%
Weaponness & Ramshill	8,060	9%	19%	14%	28%	31%
Whitby/Mayfield cum Mulgrave	8,000	15%	13%	14%	30%	28%
Whitby/Streonshalh	8,440	15%	15%	15%	31%	25%
Woodlands	7,480	20%	14%	15%	27%	23%



Scarborough is a major tourist town attracting almost 4 million visitors annually (2024 tourism data); these visitors are attracted to the amazing coastline in Scarborough as well as the beautiful parks and gardens. Keeping up regular maintenance of these open spaces is vitally important to the economic impact of tourism.

5.3 Friends of South Cliff Gardens

The Friends of South Cliff Gardens is a community group which was established in June 2006 to help look after the public gardens between Filey Road, Ramshill Road, Holbeck Road and the sea. The aims of the group include protecting and enhancing the natural beauty, wildlife, flora and fauna, historical interest and facilities of the Gardens; promoting and raising funds to improve the Gardens and encourage their use; and organising social and educational events & activities in the Gardens. Members receive a regular Newsletter, and hold Open Evenings and events throughout the year. These have included family events and concerts in the gardens, gardeners' question times, organised walks and bird box building days. Every Wednesday morning there are 'Volunteers In Parks' gardening activities and all events are advertised on our noticeboards, in the Newsletters and on our website. All support is welcome whether active or passive.



5.4 Volunteer Activities in South Cliff Gardens

The Friends Group serves as the primary volunteer team dedicated to maintaining and improving the Gardens. Here's an overview of their contributions and activities:

Weekly Volunteering: "Volunteers in Parks" sessions occur every Wednesday from 10:00 am to 12:00 pm. Further information is available in the Action Plan attached.



Ecology & Conservation Efforts: Following the Gardens' restoration, a specialized branch of volunteers focuses on ecological and conservation tasks, meeting biweekly at the Holbeck end of the site.

Social Engagement: The Friends Group also hosts a monthly coffee morning on Tuesdays, generating a modest income (approximately £40) via a donation box.

Achievements and Contributions

The Friends Group has played a pivotal role in:

- Maintaining key areas like the Rose Garden and Shuttleworth Garden.
- Securing funding for South Cliff Gardens.
- Taking full responsibility for new planting areas, with guidance from Doug Stuart and the RHS, to improve sustainability across the site.

Community Involvement

Local schools occasionally visit for litter-picking and planting activities. Businesses like McCain regularly organize work parties, with a recent initiative involving 90 volunteers over three days.

Litter Picks: Litter-picking events take place regularly coordinated by Keep Scarborough Tidy

Partnership with Skills Village The new collaboration with Skills Village in Eastfield is actively:

- Training apprentices in building skills (e.g., steps, walls). Involving volunteer groups such as Andy's Man Club in various construction projects.



6.0 Landscape and Buildings

6.1 Summary of main features

Overall size of the Garden	Approximately 16 hectares not including areas of the Esplanade.
Amenity Grass area	Cut fortnightly
Individual tree population	Key feature trees will be documented moving forwards through this plan
Tree plantation areas	
Slope Stabilisation Works area	See below
Footpaths	Including a variety of surfacing and accessible paths with way markers
Heritage Features	Ghost Paths, Interpretation Boards, fencing style, cliff lift tunnel
Childrens Play Area	See below
Ponds	one small ornamental pond within the Italian Gardens
Wildflower /bramble areas	
Heritage Shelters	14
Historic Buildings on the National Heritage List for England (all Grade II listed)	The Spa Chalet Gates to cliff opposite the Crown Hotel Beach huts and Café George V Memorial Clock Tower (Holbeck Clock Tower) South Cliff Railway Spa Bridge
Other Buildings	Beeforths Hive (Operational Depot and Community Room)

6.2 Environmental Management

South Cliff Gardens include a variety of habitats with high biodiversity. The site itself includes two non-statutory Sites of Importance for Nature Conservation (SINC)s, known as South Cliff Grasslands and Wheatcroft Cliff and South Bay. There are other SINC)s within 2km, but these are distant and well removed from the site. Adjoining the site to the east is the nationally important Cayton, Cornelian and South Bays SSSI. This site is designated for the geological and biological interest of the site, and the citation for the SSSI can be referred to in full on the Natural England website. To the north of the site beyond Scarborough town is a further SSSI, this being North Bay to South Toll House Cliff SSSI.

6.3 Habitats

Reference to Magic maps reveals that the majority of the woodland at South Cliff Gardens (extending from the Cliff Bridge to Holbeck Ravine woodlands) is designated as Woodland and Parkland Priority BAP Habitat. This is further defined as “urban parkland including woodland and open areas”, and as such this is not the typical interpretation of Woodland Parkland Priority Habitat. The woodlands of Holbeck Ravine, including the narrow strip of woodland to the rear of the properties of Esplanade Crescent, are designated as Deciduous Woodland Priority BAP Habitat. The grasslands located on the steep coastal cliffs above the Star Map, are designated as Calcareous Grassland Priority BAP

Data provided by the North Yorkshire Bat Group revealed that there are existing records of common and soprano pipistrelle bats, Daubenton’s bat and Whiskered / Brandt’s bats within the data search area. In terms of roost records, there are known roosts for pipistrelle bat roosts within 300m of the site. There is one bat record for the site itself and this is for a common pipistrelle in flight in the gardens in July 2009. The data provided by NEYEDC revealed the following species records for the site: Common toad and common frog are both recorded, but no great crested newt. Sparrowhawk has been recorded over South Cliff Grasslands. Other birds records are for goldfinch, greenfinch, bluetit, house martin, yellowhammer, robin, swallow, swift, linnnet, pied wagtail, wheatear, house sparrow, tree

sparrow, dunnock, bullfinch, starling, wren, song thrush and associated with the shoreline: fulmar, redshank, turnstone and oystercatcher. In terms of botanical records, for the Wheatcroft Cliff and South Bay SINC, there are records of quaking grass, heather, harebell, carline thistle.

There is only one waterbody at the site, which comprises a small ornamental pond within the Italian Gardens. The pond is considered likely to support the common amphibians frogs and toads, but the pond is considered to have negligible potential to support great crested newts, a European Protected Species.

6.4 Slope Stabilisation Works

The slope stabilisation works involved the implementation of low level piled retaining walls, soil nailing to address shallow seated slope instabilities, retention and reinstatement of existing masonry walls, and associated drainage works. The works also included path improvement works following soil nailing and regrading. Tree and scrub clearance was undertaken prior to commencement of engineering works. Following the completion of the slope stabilisation works a scheme of landscape reinstatement would be implemented.

The main components of the landscape reinstatement scheme include;

- Tree and shrub planting strategically placed to create visual diversity whilst allowing views out.
- Groundcover located to define the routes of historic paths removed during slope stabilisation work to form 'ghost paths'.
- Hydroseeded grassland with wild flora to stabilise the soil cliff face and rapidly provide a green finish.
- Rustic timber balustrade fencing beside footpaths at the tops of steep slopes.
- Rationalised network of macadam footpaths, resurfaced with macadam and edged with timber boards where in poor condition or damaged during construction activities.

6.4 Recreation

Addition of a new children play area specifically designed to be in keeping with the landscape of the gardens and not detract from the views or heritage of the site. It has been thoughtfully designed using natural materials to harmonise with the landscape and echo the gardens history.

Before photos



After photos



This play area is checked for safety on a weekly basis, quarterly operational inspections are undertaken as well as an independent annual inspection.

6.5 Access

A most accessible path has been created running between the Holbeck Clock Tower and the Spa Bridge (the entire length of the gardens) including a newly re-opened tunnel access way under the Spa Cliff Lift which allows direct stepless access through the gardens. In addition, several key shelters including in the Italian Gardens are accessible to wheelchair users for the first time.

6.6 Furniture

Being 16ha in area, a vast number of street furniture elements exist within South Cliff Gardens. These include:

- Benches
- Bins
- Lighting
- Wayfinding signage
- Interpretive signage
- Ephemeral features

Key Bench styles include:

Skeuomorphic Benches

Cast metal benches designed to look like rustic wooden legs/supports may be the earliest surviving bench style within the gardens and are most appropriate to the winding paths and arbours within The North and South Spa Gardens. They also appear to have been the original intended benches when The Spa gardener William Skipsey was employed to lay out the Holbeck Gardens in the 1880s. A couple of originals remain, but there are also surviving examples in Valley Gardens as well as in the Market Place.

Radiate Benches

Slightly later in date than the Skeuomorphic bench is a radiate design, seen on the Italian Steps and Spa terraces by the late 19th century and at least in part replacing some of the skeuomorphic designs in prominent seating positions between the South Cliff Bridge and The Spa. These are an unusual design and while probably not unique to South Cliff Gardens are particularly distinctive to the set piece of the Italian Steps and Terraces.

20th Century post-war Benches

Mostly in various forms of metal strapwork and timber, there are a range of benches across the gardens, mainly along the Esplanade and around the Holbeck Putting Green. Of no particular distinction, these appear to be a product of wider municipal purchases for parks and gardens across

Scarborough. As such they provide little enhancement to historical significance with South Cliff Gardens

7.0 Green Flag Award

We are committed to retaining a Green Flag for the Gardens for a minimum of 10 years. The Green Flag for South Cliff Gardens was originally achieved in 2023. This award highlights their quality, environmental care and visitor services making it a significant achievement. The Green Flag has been retained annually since and post investment we plan to retain a Green Flag Award for at least another seven further years.

7.1 2025 Feedback

South Cliff Gardens is a landmark example of successful heritage-led regeneration, following the completion of a £7 million National Lottery Heritage Fund-supported restoration. The site now presents a beautifully maintained and accessible seafront landscape that combines formal historic gardens, informal wooded slopes, and panoramic coastal views, all enhanced by sensitive conservation and modern visitor infrastructure.

The gardens offer a rich, layered experience — from restored shelters and architectural features to wild glades and nature-friendly planting. The high standard of path surfacing, step-free access, and well-maintained planting makes this site exemplary in balancing heritage and inclusivity. A strong partnership between North Yorkshire Council and the Friends of South Cliff Gardens continues to underpin positive stewardship and community involvement.

There is good evidence of clear site management, sustained public use, and a positive trajectory following restoration. Marketing and communications have also been strengthened, with an attractive online presence, consistent on-site interpretation, and positive press and social media coverage helping to re-establish the gardens as a key Scarborough destination. Looking forward, the key challenge will be to sustain these high standards and ensure that long-term maintenance, inclusive participation, and climate resilience are built into the next chapter of the site's evolution.

With restoration complete, it is critical to avoid any “tailing off” in public investment, maintenance quality, or staffing. Long-term resourcing strategies should be prioritised.

The gardens are large and complex — ongoing attention will be needed to monitor condition, usage, and environmental pressures across different zones.

Opportunities exist to strengthen intergenerational engagement, particularly through targeted outreach to younger people, schools, and newer residents who may not yet feel connected to the site.

As part of Scarborough's wider green infrastructure, South Cliff Gardens could be better linked to other nearby assets via wayfinding trails, coordinated events, or shared branding.

With climate pressures increasing, embedding adaptation strategies into landscape and infrastructure plans (e.g. sustainable drainage, drought-tolerant planting, energy-efficient buildings) will help futureproof the site whilst respecting its heritage character.

7.2 Recommendations

Any recommendations following the annual Green Flag judging will be considered for improvement over the following year as part of the regular management and maintenance.

8.0 Activity Plan and Digital Technology

MONTH	ACTIVITIES
January	Friends Coffee Morning Friends Meeting RSPB Big Garden Bird Watch Community Wellbeing Morning Garden Choir rehearsals Review website updates as required Updates for local events listings inc. Scarborough Spy, Scarborough Mumbler
February	Half Term family workshops – Go Wild, nature crafts inspired by the gardens and local area/ Busy Bees, family crafts inspired by history and heritage of the gardens. Adult craft session Friends Coffee Morning Friends Meeting Community Wellbeing Morning Garden Choir rehearsals Love in the Gardens poetry and photos Plan summer promotion in tourist brochures and local publications (digital and print) Review website updates as required Updates for local events listings inc. Scarborough Spy, Scarborough Mumbler
March	Friends Coffee Morning Friends Meeting Community Wellbeing Morning Garden Choir rehearsals Poetry Open House Heritage Open Week Review website updates as required Updates for local events listings inc. Scarborough Spy, Scarborough Mumbler
April	Easter family workshops: Go Wild Easter and spring themed nature crafts and trail, Busy Bees Easter and spring crafts Friends Coffee Morning Friends Meeting Community Wellbeing Morning Garden Choir rehearsals Poetry Open House Review onsite promotion of activities and events Review website updates as required Updates for local events listings inc. Scarborough Spy, Scarborough Mumbler
May	Friends Coffee Morning Friends Meeting Community Wellbeing Morning Garden Choir rehearsals Poetry Open House Half Term family workshops, Go Wild/ Busy Bees Adult craft session Review website updates as required Updates for local events listings inc. Scarborough Spy, Scarborough Mumbler
June	Friends Coffee Morning Friends Meeting Community Wellbeing Morning Poetry Open House Garden Choir rehearsals Update events on webpages Review website updates as required Updates for local events listings inc. Scarborough Spy, Scarborough Mumbler

July	<p>Family workshops: Go Wild inc Big Butterfly Count/ Busy Bees Friends Coffee Morning Friends Meeting Community Wellbeing Morning Poetry Open House Garden Choir rehearsals Love Parks Week activities National Marine Week activities Outdoor Yoga 2x Adult craft sessions Review website updates as required Updates for local events listings inc. Scarborough Spy, Scarborough Mumbler</p>
August	<p>Summer and Insect themed family workshops Friends Coffee Morning Friends summer party Community Wellbeing Morning Music/ poetry in the Gardens Library reading challenge/ National Literacy Trust summer collaboration Review website updates as required Updates for local events listings inc. Scarborough Spy, Scarborough Mumbler</p>
September	<p>2x Yoga in the Shuttleworth Gardens Friends Coffee Morning Friends AGM Poetry Open House Community Wellbeing Morning Garden Choir rehearsals 2x Heritage Open Day events Dementia Awareness Walk Review website updates as required Updates for local events listings inc. Scarborough Spy, Scarborough Mumbler</p>
October	<p>Half Term family workshops Halloween themed Go Wild/ Busy Bees Ghost Walk in collaboration with Scarborough TEC Friends Coffee Morning Friends Meeting Community Wellbeing Morning Garden Choir rehearsals North Yorkshire Open Studios weekend Review website updates as required Updates for local events listings inc. Scarborough Spy, Scarborough Mumbler</p>
November	<p>Friends Coffee Morning Friends Meeting Community Wellbeing Morning Garden Choir rehearsals Talk at YMCA in collaboration with Friends of South Cliff Gardens Review website updates as required Updates for local events listings inc. Scarborough Spy, Scarborough Mumbler</p>
December	<p>Friends Coffee Morning Friends Meeting Community Wellbeing Morning Garden Choir rehearsals Christmas craft workshops children and adults Review website updates as required Updates for local events listings inc. Scarborough Spy, Scarborough Mumbler</p>

9.0 Action plan

See appendix one – Monthly Action Plan

10.0 Monitoring and Evaluation Review

To maximise satisfaction with the services provided we will encourage opportunities for positive and open interactions with the local community and visitors. We will use tools such as social media and satisfaction surveys to canvas thoughts and opinions in relation to the services provided, and ensure the inputs are reviewed and actioned where required. In addition to this we will monitor visitor numbers, bookings for the facilities and activities at Beeforth's Hive and other KPIs identified to inform service monitoring and continuous improvement. Key Performance Indicators (service level) include:

- Quarterly Volunteer hour recording
- Annual events records with number of attendees and income generated
- Satisfaction surveys every three years with an action plan to identify improvements required
- Annual Green Flag Award Achievement
- Quarterly Review of Action Plan

These KPI's will be reviewed ongoing and added with targets to the service KPI's for 2026/27 and beyond.

Appendix One

Monthly Action Plan (showing hours)

Area	Action	Responsibility	Frequency	Apr	May	Jun	Jul	Aug	Sep	Oct	Nov	Dec	Jan	Feb	Mar
Ponds	Visual inspection for defects, including pump, hand landscaping etc.	Park team	Monthly	2						2					
	Recording of defects	Park team	Monthly												
	Report defects	Park team	Monthly												
	Remove litter from waters edge	Volunteers	every four weeks	2	2	2	2	2	2	2	2	2	2	2	2
	Remove litter from surrounding area	Park team	Weekly	8	8	10	10	10	10	8	8	8	8	8	8
	Dredging removing of excess leaves and debris	Park team	Annually												8
	Vegetation management	Park team	Annually												
	Carry out repairs to coping, liner and wall surrounds	Parks team & Skills Village	Annually	7			7			7			7		
	Removal of algae build up	Parks Team	Monthly	2	2	2	2	2	2	2	2				
Drainage	Remove litter, leaves, silt and other debris from within path gullies	Park team	Monthly	2	2	2	2	2	2	2	2	2	2	2	2
	Clean out grates and outlets check for damage, report and replace where needed	Parks team	Monthly	2	2	2	2	2	2	2	2	2	2	2	2
	Check caps for boreholes, report defects to Coastal Team	Park team	bi-annually		2						2				

Footpath	Visual defect check on most accessible path and curbs report all defects and rectify where necessary.	Parks Team	Weekly	8	8	8	10	10	10	10	10	8	8	8	8
	Blow leaves from most accessible path and curb edges making sure drainage gaps are clear and remove litter	Park team	Daily	8	8	8	10	10	10	10	10	8	8	8	8
	Remove debris and litter from underneath benches on the most accessible path	Volunteers	Daily	56	56	56	70	70	70	70	56	56	56	56	56
	Power wash algae growth and dirt from surface of most accessible path	Park team	Twice a year		70					70					
	Remove overhanging branches on the most accessible path	Park team	Twice a year			28					28				
	Strim 1m grass strip from both sides of the most accessible path	Park team	Monthly	28	28	28	28	28	28	28	28	28	28	28	28
	Visually check all other paths for defects, report and repair as necessary	Parks team	Monthly	2	2	2	2	2	2	2	2	2	2	2	2

	create a phased repair plan for all other paths and review annually	Park team	Annually												35
	blow leaves off other paths and pick up litter	Park team	Monthly	7	7	7	7	7	7	7	7	7	7	7	7
	Edge paths with a half moon	Parks Team	Annually				140								
	Carry out an annual accessibility audit of the paths on site and include the feedback into the phased repair plan.	Parks team &Volunteers	annually												28
Play area	Visual defect check, record and rectify of equipment	Park team	Daily	44.0	46.5	44.0	46.5	46.5	44.0	46.5	44.0	46.0	45.0	42.0	45.0
	Visual defect check fencing, record and rectify	Park team	Daily												
	Viual defect check, rectify and record sandpit and rake through	Park team	Daily	30	31	30	31	31	30	31	30	31	31	28	31
	Report defects to supplier to make good where necessary	Park team	Daily												
	Check signage for defects and rectify where necessary	Play team	Monthly	1	1	1	1	1	1	1	1	1	1	1	1
	Cleaned algae from wood and paths	Park team	Twice a year		14					14					
	Remove litter	Park team & volunteers	Daily												

	Remove graffiti	Parks team	As required												
	Recorded visual inspection, moving parts, lubricated	Play team	Fortnightly	2	2	2	3	3	2	2	2	2	2	2	2
	Check surface matting	Play team	Fortnightly	2	2	2	3	3	2	2	2	2	2	2	2
	Independent annual inspection	External contract	Annually												
Entrances and thresholds	Visual defect checks surface and fixtures	Park team	Daily												
	Recorded defect checks surface, fencing and fixtures and repair where necessary	Park team	Monthly	3	3	3	3	3	3	3	3	3	3	3	3
	Clean entrance signs and way markers	Park team & volunteers	Monthly	4	4	4	4	4	4	4	4	4	4	4	4
	Remove litter and debris	Park team & volunteers	Daily												
	Visual check of all thresholds, record and rectify defects where necessary.	Parks and Property Services	Monthly	4	4	4	4	4	4	4	4	4	4	4	4
Lighting	Check for visual faults and report defects to Asset Management	Park team	Monthly	1	1	1	1	1	1	1	1	1	1	1	1
	H&S check of all lighting and function	Property Services	Twice a year	2	2	2	2	2	2	2	2	2	2	2	2
	Clean lighting columns and glass housing	Property Services	Twice a year.		16				16						
	Repaint columns where necessary	Property Services	Annually			7									

Benches	Visual defect check, record defects to property Services to rectify where necessary	Parks Team and Volunteers	monthly	4	4	4	4	4	4	4	4	4	4	4	4
	Washed clean	volunteers	Twice a Year	42						42					
	Touch up paintwork / treatment as required	Parks & Volunteers	annually		70										
	Remove plaques where leases have ended.	Property Services	as required	7							7				
	Remove dead flowers	Parks Team	weekly	4	4	5	5	5	5	4	4	4	4	4	4
	Bench plinths repoint and repair	Property Services	as and when							70					
	Check benches are securely fixed to the ground	Parks Team	Monthly	2	2	2	2	2	2	2	2	2	2	2	2
Putting Green	Mowing - green 24" cylinder	Park team	Weekly	12	12	12	15	15	15	12	12				
	Mowing - grass surround	Park team	Every 2 Weeks	4	4	4	6	4	6	4	4	4	4	4	4
	Apply moss kill	Park team	Annually	4											
	Apply selective weedkiller including indicator	Park team	Annually	4											
	Apply granular fertiliser	Park team	Annually		4										
	Scarify	Park team	Annually		7										
	Cut after scarifying	Park team	Annually		4										
	Slitting	Park team	Annually		3					3					
	Cut after slitting	Park team	Annually		8					8					
	Top dress	Contractor	Annually			42									

	Make good and overseed worn	Park team	Annually						28						
	Edge surrounding paths with half moon tracer / spade	Park team	Annually				28								
	Clear leaves	Park team	8 times a year							8	8				
Formal Grass	20mm cut - boxed	Park team	35		110	110	110	110	50						
	Remove leaves	Park team	Three per year						14	14	14				
	Selective manual weeding	Park team & Volunteers	Monthly	21	21	21	21	21	21						
	Edge with long handled shears	Park team	Fortnightly	8	10	10	10	8	10	8	8	8	8	8	8
	Edge with half moon tracer / spade	Park team	Annually			42									
	Litter picked and visually checked	Park team	Daily	2	3	2	3	2	2	2	2	2	2	2	2
	Make good damaged or worn areas	Park team	Annually												
Recreational grass areas	50mm cut - let fly	Parks Team	21	84	84	84	84	84	84	84					
	Remove leaves	Park team	4 times a year			7			7			7			7
	Edge with half moon tracer / spade	Park team	Annually			28									
	Litter picked and visually checked	Park team & Volunteers	21	84	84	84	84	84	84	84					
	Make good damaged or worn areas	Park team	Annually	14											
	Slit damp areas	Park team	Annually						14						
Long grass	Litter picked and visually checked	Volunteers	Monthly	7	7	7	7	7	7	7	7	7	7	7	7
	Strim all areas below 45 degrees	Park team	Annually			175									

	slope remove risings														
	<i>Survey species</i>	Volunteers				8	8								
Sunken Garden Meadow	Litter picked and visually checked	Volunteers	Daily	30	31	31	30	31	31	30	31	30	31	31	28
	Strim back and remove the risings. (possibility to collect seeds/spread arisings elsewhere?)	Parks Team	Annually					70							
	Manual removal of weeds and invasive species	Parks Team & Volunteers	every two months		4		4		4						
	<i>Seed collection</i>	Parks Team & Volunteers	annually					40							
Strimming	Selective strimming	Park team	Monthly		14		14		14						
	Nettle / weed clearance	Park team	Twice per year												
	Tree bases	Park team	Four per year												
	Walls, post, signs, boreholes, inspection covers, fences	Park team	Twice per year												
Bedding	Litter picked and visually checked	Volunteers	Monthly	7	7	7	12	14	7	7	7	7	7	7	7
	Strip plants / bulbs	Park team	Twice per year		105					105					
	Prepare border - clear debris	Park team	Twice per year												
	Prepare border - incorporate organic matter	Park team	Annually		105					105					
	Prepare border - dig over / deep rotovate	Park team	Twice per year												

	Prepare border - shape surface / obtain tilth	Park team	Twice per year		21					21					
	Plant	Park team	Twice per year			105					105				
	Irrigate	Park team	twice a year		14					14					
	Apply fertiliser / liquid feed	Park team	Three per year												
	Hoe, weed	Park team	Fortnightly				28	28	8						
	Remove leaves	Park team	Six per year												
	Edge with long handles shears	Park team	Fortnightly												
	Edge with half moon tracer / spade	Park team	Annually												
	Reinstate turf edging / reduce border.	Park team	Annually												
Hedges	Litter picked and visually checked	Park team & Volunteers	Daily												
	Gap up with appropriate species	Park team	Annually						7						
	Cut with powered equipment (formal)	Park team	Annually							70					
	Cut with powered equipment (low informal)	Park team	Annually							70					
	Remove shred and compost arisings	Park team	As required							63					
	Remove alien species	Park team	Annually												
	Weed control	Park team	Three per year												
Shrubs	Litter picked and visually checked	Volunteers	Daily	30	31	31	30	31	31	30	31	30	31	31	28

	Gap up with appropriate species	Park team	Annually							35					
	Weeding where appropriate	Park team & Volunteers	monthly		8	8	8	8	8	8	8				
	Spot spray herbicide	Park team	Three per year		14		14		14						
	Edge with long handles shears	Park team	Fortnightly												
	Edge with half moon tracer / spade	Park team	Annually												
	Prune as scheduled within species schedule	Park team	As required							210					
	Shred and compost arisings	Park team	As required							35					
	Mulch with composted wood chip / bark	Volunteers	Annually								400				
Herbaceous	Litter picked and visually checked	Parks Team & Volunteers	Monthly	14	14	14	14	14	14	14	14	14	14	14	14
	Hoe weed	Parks Team & Volunteers	Fortnightly	84	84	84	84	84	84	84	84				
	Spot weed herbicide	Parks Team	Fortnightly	8	16	16	16	16	8	8	8	8	8	8	8
	Stake and tie plants	Parks Team & Volunteers	As required		7			7			7			7	
	Irrigate	Parks Team & Volunteers	Six per year	7		7		7		7		7		7	
	Cut back	Parks Team & Volunteers	Annually							210					
	Prune	Parks Team & Volunteers	As required	28	28	28	42	28	28	28					
	Lightly fork	Parks Team & Volunteers	Monthly		84	84	84	84	84	84					
	Remove leaves	Parks Team & Volunteers	Five per year						48	48	48				

	Mulch with soil improver	Parks Team & Volunteers	Annually	350											
	Edge with long handles shears	Parks Team & Volunteers	Fortnightly												
	Edge with half moon tracer / spade	Parks Team & Volunteers	Annually	28											
	Gap up with appropriate species	Parks Team & Volunteers	Annually							140					
Rocks	Litter picked and visually checked	Park team & Volunteers	Daily												
	Strim around	Park team	Fortnightly												
	Remove graffiti	Parks team / Graffiti team	As required	1	1	1	2	2	1	1	1	1	1	1	1
Woodland and tree management	Litter picked and visually checked	Parks Team & Volunteers	Daily												
	Inspect current tree cover in respect of health and safety	Trees & Woodland Team	Annually			14					14				
	Remove deadwood, crown clean and lift (2.5m) trees over footpaths, chip and dispose of arisings	Parks and Trees & Woodland Team	As required				63								
	Remove deadwood, crown clean and lift (5.0m) trees over vehicular service roads, chip and dispose if arisings	Parks and Trees & Woodland Team	As required				63								
	Prune back trees that overhang neighbouring gardens, chip and dispose of arisings	Parks and Trees & Woodland Team	As required												
	Monitor footpath condition for root damage	Park team	Monthly												

	Removal of epicormic / basal / suckers	Park team	Annually				28							
	Planting of new trees	Parks and Trees & Woodland Team	Annually						42					
	Check and make good damage to newly planted trees and structures	Park team	Monthly									14		
	Irrigate newly planted trees (up to 3 years)	Park team	Four per year	7	7	7	7							
	Formatively prune young trees, chip and dispose of arisings	Trees & Woodland Team	Annually			42								
	Removal of programmed, dead, diseased trees - stump grind, dispose or retain deadwood on site as applicable,	Parks and Trees & Woodland Team	As required							105				
SSP	Cut back bank and rake areas of bank that are less than 40 degrees.	Parks team	Annually						210					
	Cut back the rest of the banks with rope access	Parks Team	Annually						420					
	Selective removal all invasive species such as docks for more difficult weeds in area	Parks Team	Annually			420								

Record species.	Parks Team & Volunteers	Annually		10	10	10	10	10	10					
Wildflower English Heritage Seed Mix planting in selective areas not treated by herbicide.	Parks Team	Annually	140											
Hand Pull Weeds in accessible areas (thistles/docks etc)	Parks Team & Volunteers	Monthly	42	42	42	42	42	42						
Weed drainage gullies	Parks Team	Monthly	7	7	7	7	7	7						
Check wooden railings for damage	Parks Team & Volunteers	Weekly	30	31	30	31	31	30	31	30	31	31	28	31
Check new tree and shrub planting for damage, report and replace	Parks Team & Volunteers	Monthly	7	7	7	7	7	7	7	7	7	7	7	7
Spray off knot weed and check cordon is secure. Write report (including photos) and file.	Parks Team	Monthly	4	4	4	4	4	4	4	4				
Cut back ghost path	Parks Team	Every 6 months	4						4					
Spray ghost path and check trial establishment	Parks Team	Every 6 months	4						4					
Litter pick the site	Parks Team	Every 6 months												
Check lighting condition, report repairs	Parks team & Property Services	Every 6 months												
Clean interpretation and wayfinding signs	Parks Team & Volunteers	Monthly												

	Check condition of the surfaces, steps and edging and carry out any repairs or replacements where necessary.	Parks team & Property Services	Every 6 months												
	Check condition of benches, clean and carry out repairs where necessary	Parks team & Property Services	Every 6 months												
	Cut grass edges back 2m from the paths	Parks Team	Monthly	14	14	14	14	14	14						
Steps	Visual defect checks	Park team	Daily												
	Recorded defect checks	Park team	Monthly												
	Report defects	Park team	Daily												
	Make good defects	Parks team & Property Services	As required												
	Remove debris and litter	Park team & Volunteers	Weekly		2	2	2	2	2	2	2	2			
	Remove / report graffiti	Park team	As required												
Shelters	Visual defect checks	Park team	Daily	88	92	88	92	92	88	92	88	92	92	80	92
	Recorded defect checks	Park team	Monthly												
	Report defects	Park team	Daily												
	Make good defects	Parks team & Property Services	As required	7	7	7	7	7	7	7	7	7	7		
	Remove debris and litter	Park team	Weekly												
	Remove debris from the back of the shelters ensuring no	Parks Team	Monthly		14	14	14	14	14	14					

	earth/plant material is in contact with the wood.														
	Always ensure grass cuttings and soil are washed off the shelters following strimming.	Parks Team	Every two weeks												
	Clean out gutters and drains	Parks Team	Monthly												
	Remove leaves and moss from roof and cut back overhanging branches	Parks team & Property Services	Annually	28							42				
	Remove / report graffiti	Park team	As required				7				7				
Ops Buildings external	Check structure and review required repairs	Parks & Asset management	Weekly	4	4	4	5	5	4	5	5	4	4	4	4
	Cleaning of gutters and drainage outlets	Asset management	2 year	8							8				
	Painting of exterior painted areas	Asset management	Every 5 years	8							8				
	Spot painting of exterior	Asset management	As required				4								
	Washing of paintwork / exterior surfaces	Asset management	As required	4							4				
	Floor and steps to be kept brushed down and kept free from growths	Parks team	Weekly	2	2	2	2	2	2	2	2	2	2	2	2
	Shutters to be oiled, eased and maintained as operational	Asset management	Monthly	1	1	1	1	1	1	1	1	1	1	1	1

	Roof windows to be greased occasionally in order to be operational	Asset management	Every 6 months	4						4					
	Roof to be kept clear of debris	Asset management	As required												8
	Cleaning of windows externally	Parks & Volunteers	Four per year	4						4					
	Remove / report graffiti	Parks team	As required					4							
	All accesses building to be kept clear	Parks team	Daily	30	31	30	31	31	30	31	30	31	31	28	31
Ops Buildings internal	Empty all waste receptacles	Parks Team & Volunteers	twice a week	16	16	16	20	20	16	20	20	16	16	16	16
	Damp wipe any dust, debris and spillages from all surfaces	Parks Team & Volunteers	twice a week												
	Clean any sanitary waste ware ie sinks, fountains	Parks Team & Volunteers	twice a week												
	Vacuum clean all dust control matting	Parks Team & Volunteers	twice a week												
	Remove stains from carpets as necessary	Parks Team & Volunteers	twice a week												
	Remove all graffiti	Parks Team & Volunteers	twice a week												
	Sweep or vacuum, using dust control methods, all hard surfaces	Parks Team & Volunteers	twice a week												
	Spot clean all hard floor surfaces	Parks Team & Volunteers	twice a week												
	Spot clean internal glass surfaces	Parks Team & Volunteers	twice a week												

	Litter pick and brush outside main entrances, ramp and external patio areas	Parks Team & Volunteers	twice a week												
	Clean all stainless steel surfaces	Parks Team & Volunteers	twice a week												
	Spot clean all chairs / furniture	Parks Team & Volunteers	twice a week												
	Stairs and hard floors to be mopped / mechanically scrubbed	Parks Team & Volunteers	twice a week												
	Spot paint / fill any damage to walls / surfaces	Parks Team & Volunteers	As required	2	2					2	2	2			
	Clean insides of internal windows	Parks Team & Volunteers	Four per year	24			28			28			24		
Toilets	Empty all waste receptacles except feminine hygiene and nappy bins	Parks team	Daily	15	15.5	15	15.5	15.5	15	15.5	15	15.5	15.5	14	15.5
	Thoroughly clean hand basins, toilet bowls, urinals, showers and all pipe work	Parks team	Daily	90	93	90	93	93	90	93	90	93	93	84	93
	Clean splash backs to hand basin	Parks team	Daily												
	Clean and polish all mirrors	Parks team	Daily												
	Replenish toilet commodities	Parks team	Daily												
	Spot clean walls and toilet partitions	Parks team	Daily												
	Remove any graffiti	Parks team	Daily												

	Thoroughly mop / mechanically scrub all floors	Parks team	Daily												
	Monitor throughout the day	Parks team	Daily												
	Clean all waste receptacles	Parks team	Daily												
	Wash or polish all furniture, ledges. Skirting, pipes and radiators	Parks team	Daily												
	Wash paint work to doors	Parks team	Daily												
	Clean glass to doors, internal windows and circulation	Parks team	Daily												
	Remove marks to walls, internal glass and light switch area	Parks team	Daily												
	Spray clean all hard surfaces	Parks team	Daily												
	De-scale all toilets, except stainless steel.	Parks team	Daily												
	Spot paint / fill any damage to walls / surfaces	Parks team	As required		35										
Holbeck Landslip Area	Remove invasive Crocosmia x crocosmiiflora and the small clumps of montbretia and the single garden escape Japanese rose, as these species is known to	Parks Team	Annually				140								

	become invasive, particularly in coastal grassland habitats														
	Cut back one half of grassland on the bank and remove the risings.	Parks Team	Annually						140						
	Ensure that ivy does not encroach further through removal of ivy on the top of the slope at the north edge of study area.	Parks Team	annually			14					14				
	Remove young sycamore trees in grassland	Parks Team	Annually												
	Retain current area of gorse and bramble cover however remove any new areas an encroachment	Parks Team	Annually												
Management of invasive species	Monthly treatment of knot weed	Parks Team	Monthly		2	2	2	2	2	2	2	2			
	Check for other invasive species and report	Parks Team	Monthly	2	2	2	2	2	2	2	2				
Waste management and disposal	Remove green waste skip and process	Tractor	Weekly	36	40	40	40	40	40	40	36				
	Create onsite habitat piles	Parks Team & Volunteers	Annually during pruning season							40					
	Review onsite waste disposal annually to	Parks Team	Annually during						7						

	try to reduce carbon footprint		pruning season												
Bins	Daily check and empty of bins	Parks Team	Daily	90	93	90	93	93	90	93	90	93	93	84	93
	Disposal of mixed waste														
	Annual check of bin condition	Parks Team & Volunteers	Annually												
Italian Gardens	Prune foil layer to ensure key views down into the Italian Garden, through the multistemmed trees. Allow for gentle undulation across the height	Parks Team	Annually							105					
	Remove new growth from the base of the multistem trees leaving only mature trunks.	Parks Team	Annually												
	Crown lift the skirts of all trees to allow visual connection through the site	Parks Team	Annually												
	Remove any dead, diseased, dying or crossing branches	Parks Team and Tree & Woodland Team	Annually												
	Lift and divide herbaceous perennials	Parks Team	Annually							28					
	Remove weeds from all borders	Parks Team	Every 2 weeks		28	28	28	28	28	28					
	Mulch and maintain the compost mulch to a minimum of 2	Parks Team	Twice a year		35					35					

	inches around new planting														
	Monitor newly installed plants and report any losses/damages	Parks Team	Monthly	2	2	2	2	2	2	2	2	2	2	2	2
	Plant urns and wash the outsides	Parks Team	Twice a year												
	Watering	Parks Team & Volunteers	twice a week	16	16	16	16	16	16	16	16				
	Clean down resin surfacing and steps	Parks Team	Annually		21										
	Clear out drainage	Parks Team	Twice a year												
	Check walls for damage/movement and repair/report where necessary	Parks Team & Asset Management	Twice a year												
	Repaint colonnade and check trellising for damage, repair where necessary.	Parks and Skills village	Annually		112										
Rose Garden	Cut grass edges	Parks Team	Once every 2 weeks	2	2	2	2	2	2	2	2				
	Cut grass	Parks Team	Once every 2 weeks	16	16	16	16	16	16	16	16				
	Feed roses	Parks Team	In spring and summer												
	Dead head roses	Parks Team	Every 2 weeks	4	4	4	4	4	4	4	4				
	Prune roses	Parks Team	Annually								102				
	Mulch roses	Parks Team	Annually									175			

	Weed borders	Parks Team	Once every 2 weeks		14	14	14	14	14						
	Spray for pests	Parks Team	As required			7			7						
Signage, wayfinding and interpretation	Check signs for damage and repair/report where needed.	Parks & Volunteers	Weekly												
	Wash down signs	Parks Team & Volunteers	Weekly	28	35	35	35	35	35	35	28	28	28	28	28
	Makes sure no grass cuttings are stuck to the signs following strimming.	Parks Team	Every two weeks.	10	10	10	10	10	10	10	10				
Railings	Check all metal railings across site for damage, report, photograph, repair and replace where necessary	Parks Team & Asset Management	Every 6 months		35						35				
	Clean sap off handrails on well used steps	Parks Team & Volunteers	Monthly	7	7	7	7	7	7	7	7	7	7	7	7
	Lightly sand and repaint all black painted railings across site	Volunteers	Annually	200						200					
	Check all wooden railings for damage, repair and replace where necessary ensuring cross detail is maintained.	Asset Management	Every 6 months												

Bore holes	Clean away grass and other debris from around the bore hole.	Parks Team	Monthly												
-------------------	--------------------------------------------------------------	------------	---------	--	--	--	--	--	--	--	--	--	--	--	--